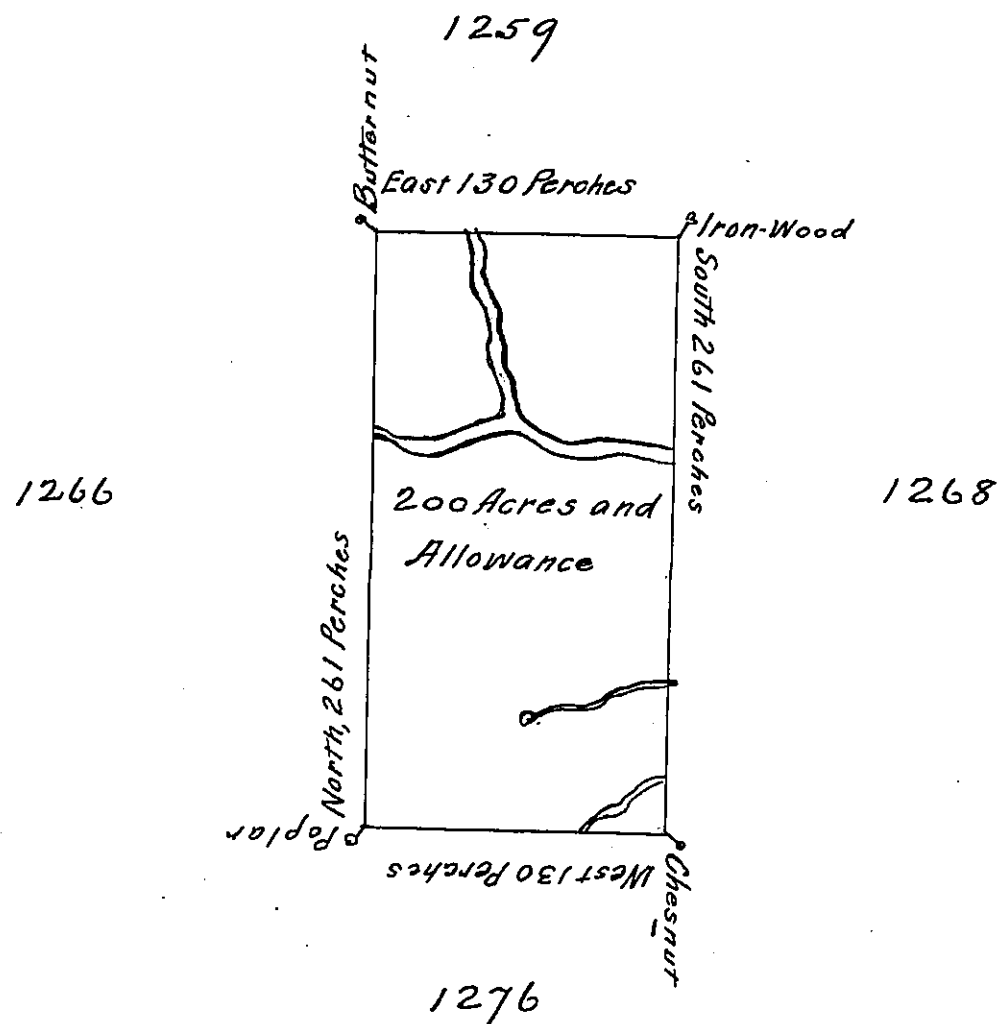


DONATION-LAND, IN DISTRICT No 6,
Lot, No. MCCLXVIII



In Pursuance of an Act of General Assembly of the State of Pennsylvania, passed the twenty-fourth Day of February 1785, intitled, 'An Act for directing the Mode of distributing the Donation-Lands promised to the Troops by this Commonwealth,' and by Order of the Surveyor-General, with the Approbation of the Honourable the Executive-Council, I have Surveyed, on the Twenty eighth Day of November 1785, the above described Tract of Two hundred Acres of Land, and Allowance of Six per Cent for Roads, &c No. 1267. Situate in District No. 6, on the West Side of the Allegheny River, in the County of Westmoreland.

Jas. Chrystie Deputy

Surveyor

John Lukens, Esq.

Surveyor-General.

IN TESTIMONY that the above is a copy of the original remaining on file in the Department of Internal Affairs of Pennsylvania, made conformably to an Act of Assembly approved the 16th day of February, 1833, I have hereunto set my Hand and caused the Seal of said Department to be affixed at Harrisburg, this Twenty-fourth day of June 1908

Henry Howard
Secretary of Internal Affairs.